



SINGLE DOOR SENSOR

Model: AU-XW60



5-7 CM



IP20



Energy saving

TECHNICAL SPECIFICATIONS

Model	AU-XW60
Product Name	Single Door Sensor
Input power supply	DC 12-24 V
Sensing Range	5-7 cm
Maximum Load	12V-60W / 24V-100W
Sensor wire length	1.5 meters
Operating Mode	Door sense mode
Installation Method	Concealed / Surface mount

WORKING INSTRUCTIONS

INPUT

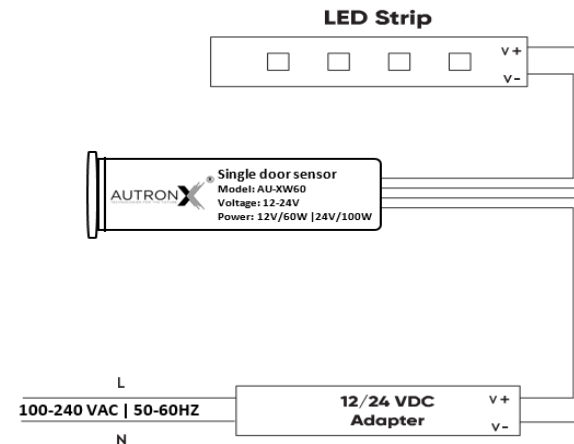
Connect your SMPS/Adapter +VE to Input “Letter marking wire”

Connect your SMPS/Adapter -VE to Input “----- marking wire”

OUTPUT

Connect your LED +VE to Output “Letter marking wire”

Connect your LED -VE to Output “----- marking wire”



MOUNTING TYPE

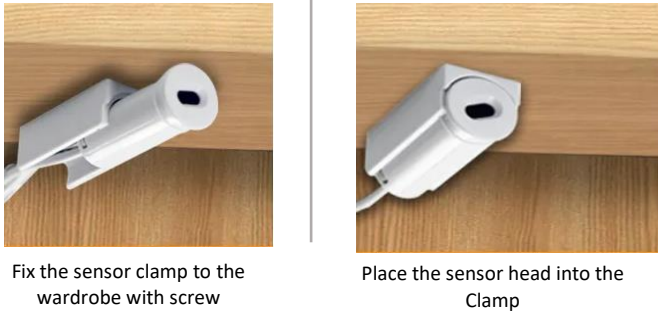
CONCEALED:

- Drill holes for sensor & hidden cable routing then fix the sensor head.

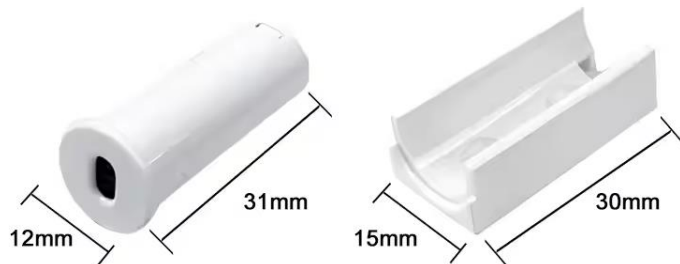


SURFACE MOUNT:

- Fix the sensor clamp by screw then fix the sensor head in to the clamp.



PRODUCT MEASUREMENTS



HOW IT WORK

- 1) The sensor distance may vary in the specified range based on the reflective nature of the surface in front of the sensor.
- 2) The sensor detection range will change according to surface in front of the sensor.

Door open light on

Door closed light off



Cover up, turn off the lights

Release, the light is on

APPLICATIONS



Cabinet



Wardrobe



Kitchen



Dressing Area

SAFETY INSTRUCTIONS

- Indoor use only.
- Do not disassemble the product.
- Please do not install the switch in a water drip location.